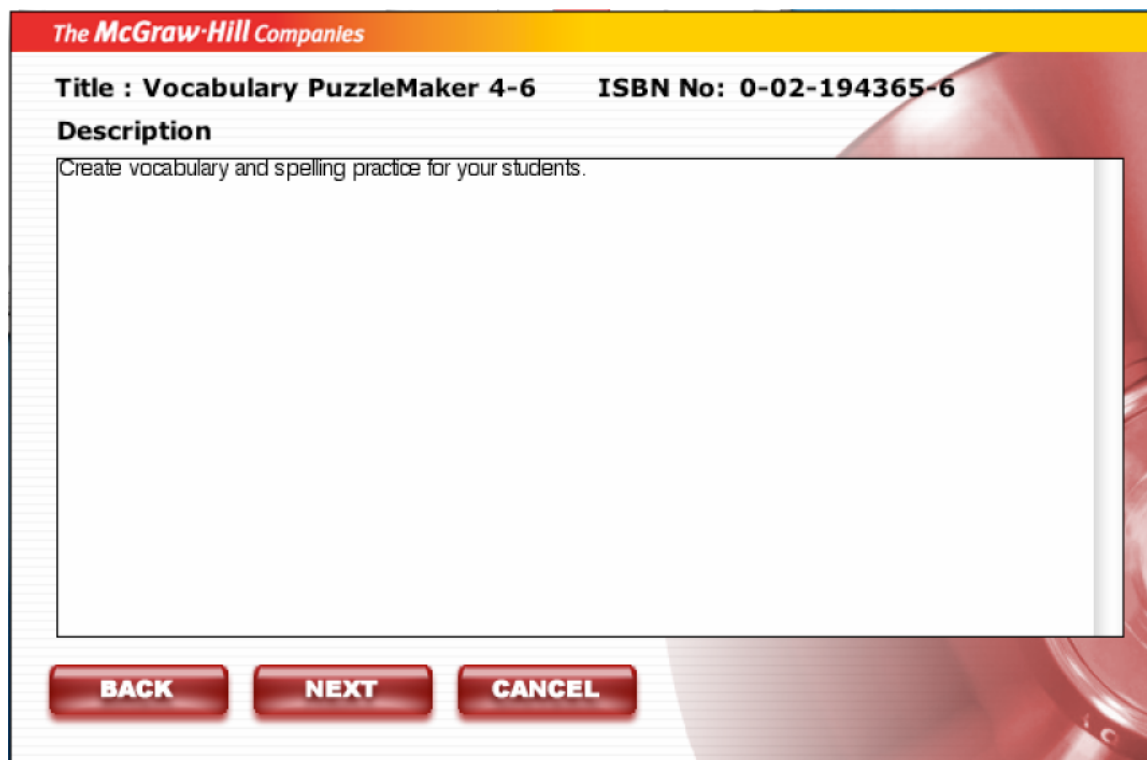
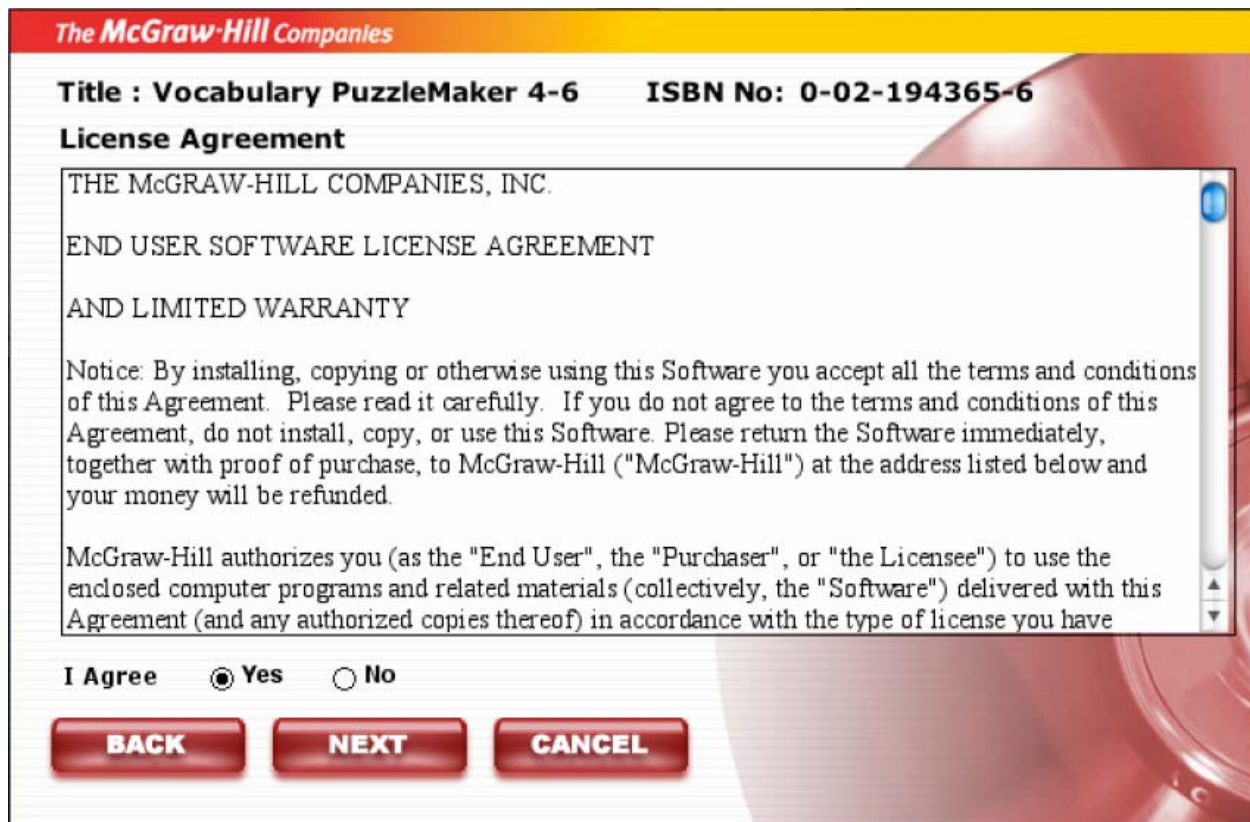


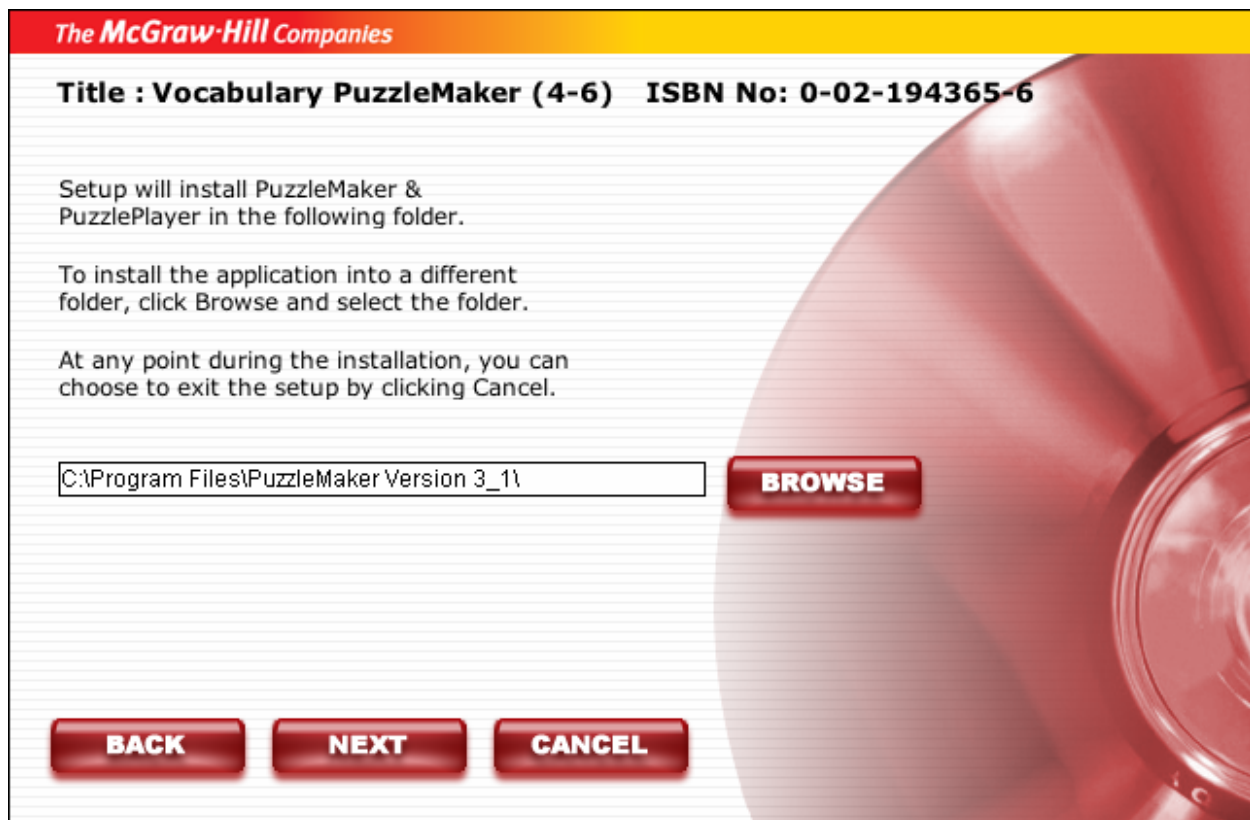
Launch **Setup** to install PuzzleMaker. A splash screen is displayed providing PuzzleMaker information. Click **Next** to continue.



The title, ISBN, and description of PuzzleMaker is displayed. Click **Next** to continue.



The License Agreement is displayed. Select **Yes**. Click **Next** to continue.



The default install location is "C:\Program Files\PuzzleMaker Version 3\_1\". If this is acceptable, Click **Next**. To change the install location, click **Browse**. When a location is selected, click **Next**.



Select the required application (PuzzleMaker and/or PuzzlePlayer) to be installed. Click **Next** to continue.



The Confirmation screen is displayed. Click **Next** to continue.

*The McGraw-Hill Companies*

**Title : Vocabulary PuzzleMaker 4-6**

**ISBN No: 0-02-194365-6**

PuzzleMaker and PuzzlePlayer have been successfully installed.

Click the Finish button to exit.

**FINISH**

The Status screen is displayed after the installation is over. PuzzleMaker Setup provides a progress indicator showing the installation status. Click **Finish** to exit the setup program.