

# Symbolic Still Life

## Objectives

Create a representational still life in digital media starting from a freehand sketch. Digitally enhance the original drawing using a paint program with Paintbrush, Pencil, and Airbrush tools to investigate form and color.

### SUPPLIES

- Still-life setup
- Sketchbook and pencil
- Scanner
- Computer with paint program
- Zip disk or CD
- Printer

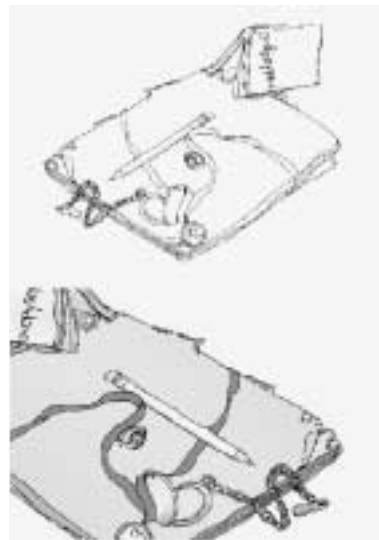


Figure 8 Student work.

### Understanding the Tools

- **Paintbrush tool:** Paint or color is applied in even strokes on the canvas with this tool. To paint a straight line, hold down the Shift key as you drag the tool. To draw a straight line between two points, click on the canvas to set the first point, then press Shift and click to mark the end point. A line will appear between the two designated points. The brushstroke size can be adjusted in the Brushes palette. Once selected, your cursor will become a circle that shows the actual size of your brush.
- **Paint Bucket/Fill tool:** This tool fills selected objects or an entire image with a selected color.
- **Pencil tool:** This tool works like a traditional pencil except that it can only create hard-edged lines. The thickness of the line can be adjusted in the Brushes palette.
- **Airbrush tool:** It applies paint with diffused edges. Different brush sizes and shapes and varying amounts of pressure can be adjusted in the Brushes palette.
- **Eraser tool:** Use this tool to rid the canvas of unwanted elements.

**Step 1** Organize a still-life setup or arrangement that symbolizes you or your interests.

**Step 2** In your sketchbook, create a clean, crisp modified contour line drawing of your still life. Do not add value or color. (See Digital Studio Project 1 for an introduction to contour line drawing.)

**Step 3** Place your final sketchbook drawing facedown on the scanner and scan the image. Follow the instructions provided with your scanner. Set the scanner to scan the image at 100 percent at 300 dpi (dots per inch) and save the scanned image as a TIFF file. Save this image to a storage device (Zip disk or CD) so that it can be transferred to your computer if necessary.

**Step 4** Open the image in a paint program and save it again with a new name. Then save once again with the same new name and a number one (1) next to the title. This

second saved file allows you to keep the original scan intact without any modifications.

**Step 5** On this last saved copy, trace over your pencil marks using the Pencil tool on the toolbar.

**Step 6** Experiment with the tools listed in Understanding the Tools above to suggest the form for each of the items in the still-life arrangement. Add colors, value, and details.

**Step 7** Look carefully to observe the lightness and darkness of each object. Select light, middle, and dark values of the colors for each item in the arrangement.

**Step 8** Color your arrangement with realistic colors. This allows you to copy the colors that you observe. For example, if the apple is red in the still life, your painted apple should be red.

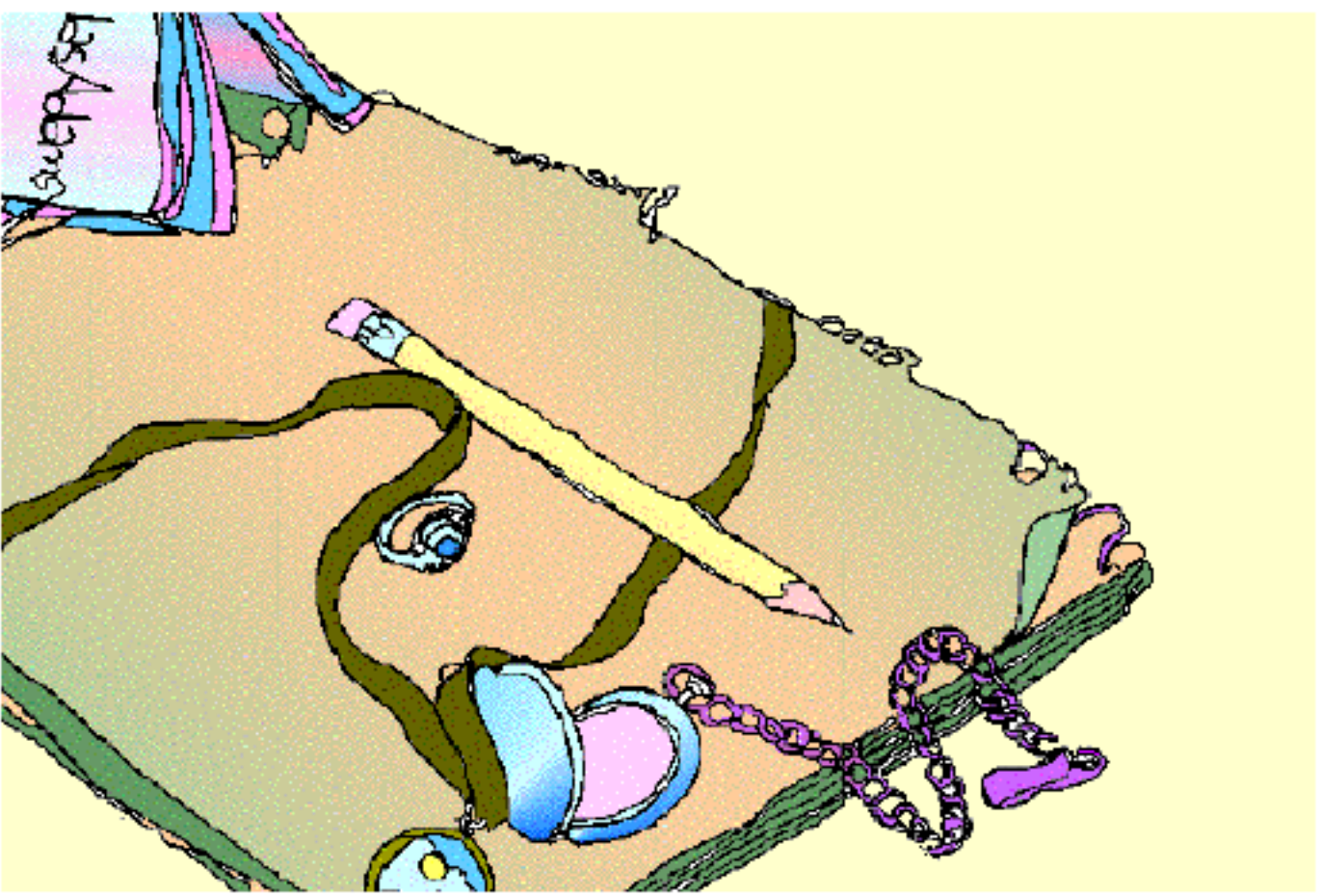
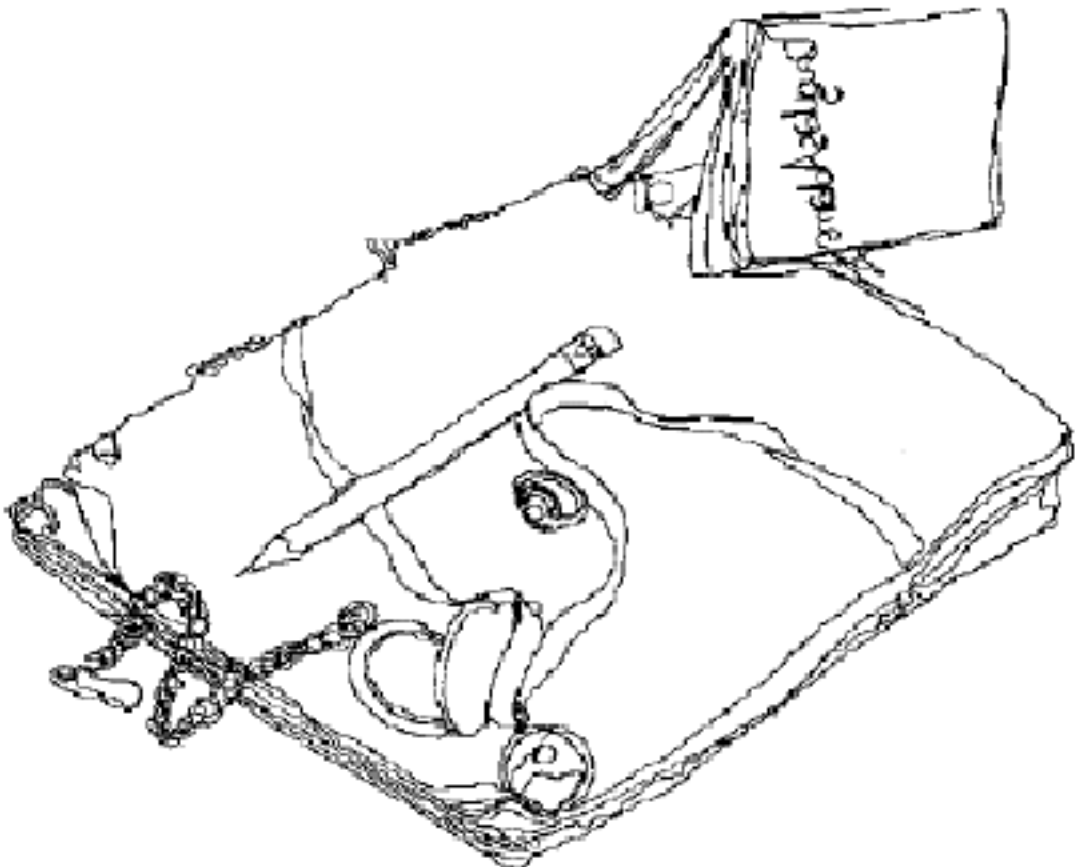
**Step 9** Save your final work and print.

**Special Note:** A round-robin critique can be conducted moving from computer to computer with each group rotating around the room to see and talk about the artworks in progress. These questions should be asked and answered as each work is examined: What do you like about the work? Why? What is needed or missing?

## Examining Your Work

---

1. Which tools did you use to create your image?
2. What colors did you use? Do the colors realistically represent the items in the still life?
3. How did you use color and value successfully to suggest form?
4. Did you capture the details of the objects?
5. What do the still-life items tell the viewer about you?



# “Fill It Up” Illustration

## Objectives

Use the Fill and Stroke tools in a vector-based drawing program to create the illusion of depth in a scanned contour drawing. Work with several values in a limited color palette.

### SUPPLIES

- Scanned contour drawing
- Computer with vector-based draw program
- Printer

**Special Note:** The new Paint Style palette and Fill tools in draw programs make filling objects much easier, faster, and more precise. In this palette, the paint attributes are set for the objects that you are drawing. Objects can be filled with a color, pattern, or gradient fill. When you fill an object, everything inside that object is filled. If you want only the outline painted, use the stroke tool.



Figure 9 Student work.

### Understanding the Tools

Select Show Paint Style from the Window pull-down menu. The Paint Style palette will appear. You may size this palette to suit your work style or monitor. Do this by moving your cursor to the small downward-pointing triangle near the top right corner of the palette and hold down the mouse button. The panel display pop-up menu will open. Click the solid arrow selection tool in the toolbox. Move the pointer to follow the lines of your drawing, clicking the mouse on each turn. This leaves a line with points at each turn. In a vector-based draw program, only these points are remembered. Look at the Paint Style palette to see how the object will be stroked and filled. The fill box shows the color that will fill the object; the stroke box shows what color the line will be.

**Step 1** Open a scanned contour drawing.

**Step 2** Click the appropriate tool palette to adjust the size of the brushstroke (usually the Paintbrush tool). A box will appear so that you can adjust the width of your stroke. Once you have made your selection, try the width to determine whether it suits your needs.

**Step 3** Select a color for the stroke and another color for the fill in the Paint Style palette.

**Step 4** Using the Paintbrush tool, draw over each of the lines to create shapes on top of your scanned drawing. Be certain that you end your stroke where you began in order to close each shape. Then click off that closed shape to begin again. Upon closing the shape, it will fill that shape with the selected fill color. If you do not want a fill color, you must select None in the fill box of the Paint Style palette.

**Step 5** Unify your image by using repeated colors throughout the composition. For contrast, try using warm colors next to cool colors or light values next to dark ones. As you place your color into the shape, remember that if it does not work, you may delete or change it. Use the solid arrow selection tool to select a shape so that you can edit or delete it.

**Step 6** Decide which values will be used in each area of your image using a balance of light, middle, and dark values of the chosen hue. For example, in a portrait the three values of the subject's skin might be represented in light orange, middle orange, and dark orange. Continue until all lines are outlined and all closed shapes are filled as desired.

**Step 7** Save and print your final image.

## Examining Your Work

---

1. Did you close all your shapes successfully?
2. How was the illusion of depth successfully achieved?
3. Did you use color and value to create a unified composition? Explain.
4. Has color been used effectively to create contrast in the composition?



